

---

## 4. AGRICULTURAL AND MINERAL RESOURCES

---

This EIR chapter describes existing agricultural and mineral resource values in the plan area, the potential impacts of future Specific Plan open space and development policies on those resources, and any associated additional mitigation measures that should be incorporated into the Specific Plan to minimize potential impacts.

### 4.1 SETTING

#### 4.1.1 Agricultural Resources

(a) Importance of Agriculture to the County. Agriculture has historically been both an important industry in Solano County and a central part of the county's identity. Agricultural lands account for more land area in the county than any other land use. The General Plan states that agriculture contributes to the region's economic health and prosperity, defines much of the county's visual character, supports wildlife habitats and migration corridors, provides open space and recreational amenities for residents and visitors, and acts as community separators defining the county's cities. The General Plan concludes that the combined benefits of agriculture help make Solano County a great place to live, work, and visit.

(b) Agricultural Trends in the County. Overall, there has been a countywide trend toward an increase in farm size and a decrease in the number of farms. The average farm size in Solano County in 2002 was 384 acres, an increase from 278 acres in 1997 (U.S. Department of Agriculture 2002). This pattern mirrors the national trend as smaller farms are combined into larger assemblages that can support industrial farming operations.

Of the county's 915 farms in 2002, more than 60 percent were small farms (ranging in size from 1 acre to 49 acres), 27 percent were mid-size farms (ranging in size from 50 acres to 500 acres), and 12 percent were farms larger than 500 acres (U.S. Department of Agriculture 2002).

In 2007, Solano County had 365,651 acres of agricultural land, representing approximately 74 percent of the unincorporated county land area total. According to the California Department of Conservation's Farmland Mapping and Monitoring Program (FMMP), the amount of designated "Important Farmland" in the county decreased from 180,855 acres in 1984 to 157,736 acres in 2006, representing a 13 percent loss over the past two decades. The loss has been due primarily to the conversion of agricultural land to urban land or low-density development.<sup>1</sup>

Cropping patterns have also been evolving in Solano County over the past 25 years. Since 1981, only four commodities have remained in the top 10 of gross county market sales: nursery products, cattle, hay, and tomato processing. Nursery products are a particularly important commodity in the county and have been number one in terms of gross sales since 2000. Commodities new to the county's top 10 list in 2006 were bell peppers, walnuts, milk, wine

---

<sup>1</sup>2008 Draft Solano County General Plan EIR, Agricultural Resources chapter, page 4.8-1.

grapes, dried plums, and almonds. Commodities that have fallen out of the top 10 since 1981 include sugar beets (attributable to processing plant closure), wheat, corn, beans, sheep, and pears.

(c) Water Availability. Water availability is extremely important to agriculture. For example, the presence of irrigation is required for land to be classified by the California Department of Conservation, Division of Land Resource Protection, Farmland Mapping and Monitoring Program (FMMP) as "Prime Farmland."

In the Middle Green Valley vicinity, water for irrigation is provided by two sources: the Solano Irrigation District and groundwater wells. The Solano Irrigation District, located in the Dixon Ridge, Pleasants/Vaca/Lagoon Valleys, Suisun Valley, and Green Valley regions, provides water to approximately 57,550 acres of agricultural-zoned land. As the county and its neighbors continue to urbanize, competition for water resources will continue to increase.

The General Plan supports agricultural activities that reduce the industry's dependence on water and promotes farming practices that minimize the use of this valuable resource.

(d) Middle Green Valley Agricultural Resources. Agricultural resources in Middle Green Valley are somewhat limited.<sup>1</sup> The plan area has historically been home to cattle grazing, row crops and small orchards and, increasingly, wine grapes.

The California Department of Conservation, Division of Land Resource Protection, administers the Farmland Mapping and Monitoring Program (FMMP) to monitor the status of and analyze impacts on the state's agricultural resources. The FMMP uses the term *Important Farmland* to describe agricultural parcels that meet certain criteria. The FMMP mapping program identifies and map three categories of *Important Farmland*-- Prime Farmland, Farmland of Statewide Importance, and Unique Farmland--based on soil characteristics and irrigation status. The ratings are then used to help prioritize conservation efforts.

For the purposes of this Draft EIR, the FMMP mapping results for the Middle Green Valley Plan area and vicinity have been excerpted from the FMMP countywide maps and illustrated on Figure 4.1 herein (Important Farmland in the Plan area and Vicinity). The three Important Farmland types and their level of occurrence in the plan area are described below:

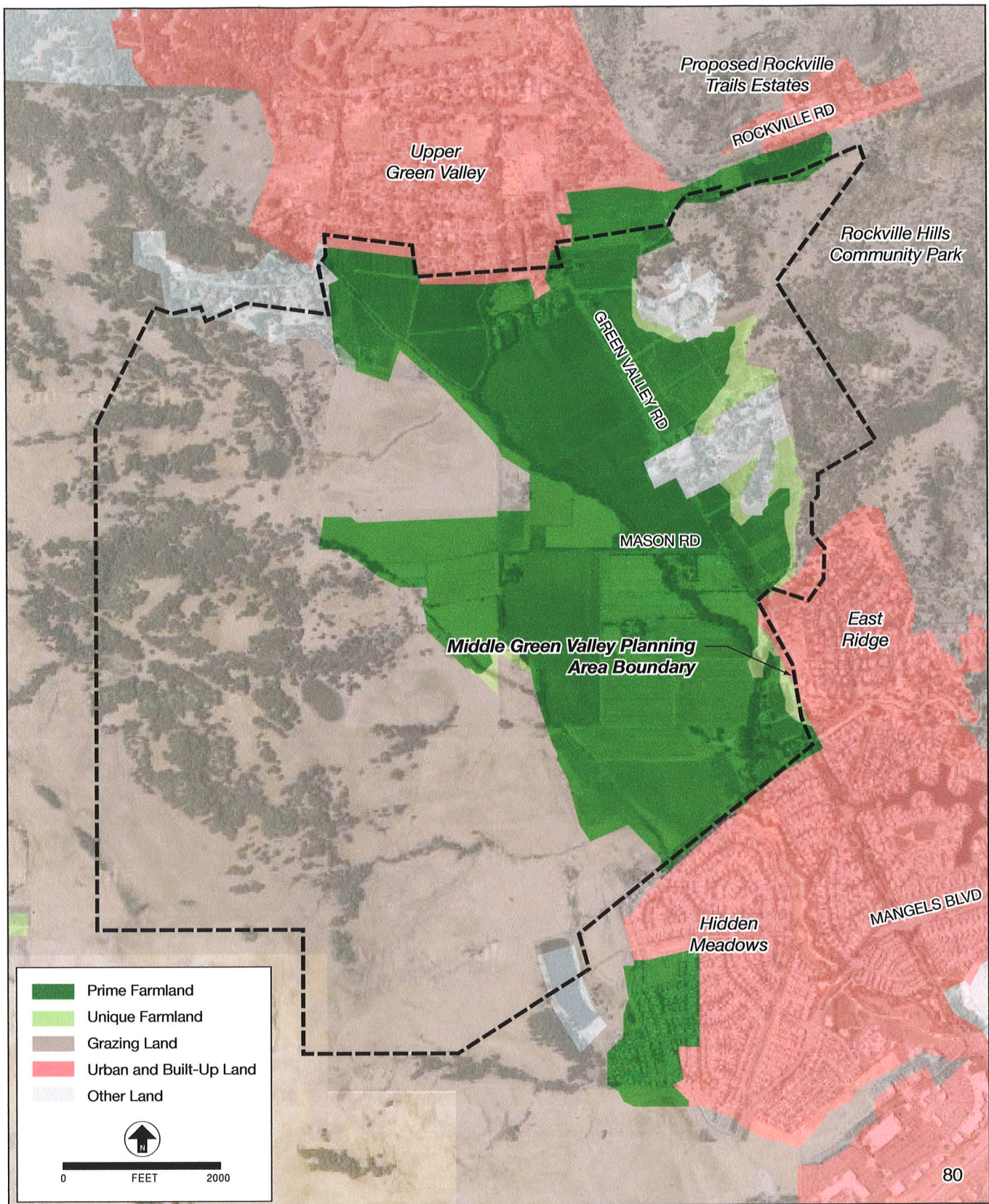
**Prime Farmland** is defined under the FMMP as "farmland with the best combination of physical and chemical features able to sustain long term agricultural production." This land category is considered to have the soil quality, growing season, and moisture supply needed to produce sustained high yields. "Prime Farmland" designated lands must have been used for irrigated agricultural production at some time during the four years prior to the FMMP mapping date (2006). Figure 4.1 indicates that approximately 700 acres of Prime Farmland are located in the plan area, concentrated along the flat, alluvial valley floor.

**Farmland of Statewide Importance** is defined under the FMMP as "farmland similar to Prime Farmland but with minor shortcomings, such as greater slopes or less ability to store soil moisture. No lands in the plan area are mapped in this category.

---

<sup>1</sup>2008 Solano County General Plan, Chapter 3: Agricultural Resources, page AG-24.





SOURCE: 2008 Solano County General Plan

Figure 4.1  
**IMPORTANT FARMLAND IN  
 PLAN AREA AND VICINITY**



**Unique Farmland** is defined under the FMMP as "farmland of lesser quality soils used for the production of the state's leading agricultural crops." This land is usually irrigated, but may include nonirrigated orchards or vineyards as found in some climatic zones in California. This land must have been cropped at some time during the four years prior to the mapping date. A small portion of the plan area (approximately 50 acres), primarily along the eastern edges of the "Prime Farmland" designated area, is indicated in this category on Figure 4.1.

Based on 2006 countywide FMMP mapping data, approximately 139,459 acres in Solano County are identified as Important Farmland. Most of these lands are concentrated in the northeastern portion of the county. Roughly 40 percent (roughly 750 acres) of the Middle Green Valley plan area is indicated on Figure 4.1 as Important Farmland, representing roughly 0.5 percent of the countywide total.

#### **4.1.2 Mineral Resources**

(a) Mines and Mineral Processing Facilities. Mineral resources mined or produced within Solano County include mercury, sand, gravel, clay, stone products, calcium, and sulfur. None of these resources are mined or produced in the plan area. There are no active mines or mineral processing facilities and no recorded past mine locations in the plan area.

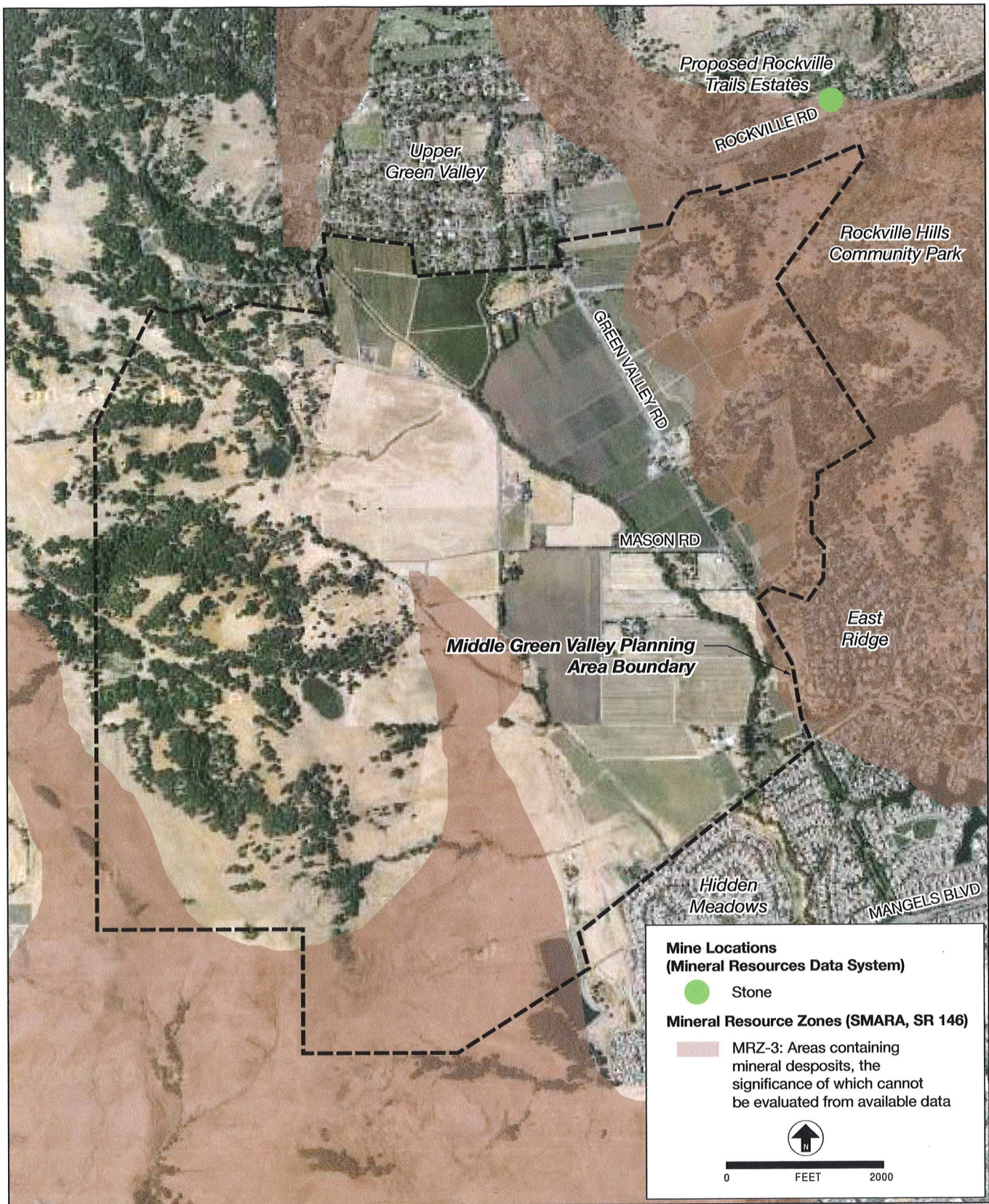
(b) Mineral Resource Zone Mapping. The California Surface Mining and Reclamation Act of 1975 (SMARA) requires that all jurisdictions incorporate mapped mineral resource designations approved by the State Mining and Geology Board in their general plans. The SMARA mapping requirement and associated mineral resource zone (MRZ) classification system are intended to ensure consideration of statewide or regionally significant mineral deposits in local planning and development administration. In particular, the mapping program is intended to prevent incompatible land use development on areas determined to have significant mineral resource deposits.

MRZs are classified by the State Geologist on the basis of geologic factors and may fall into one of four general classifications--MRZ-1 through MRZ-4. Pursuant to this requirement, the Resources chapter of the 2008 Solano County General Plan includes a countywide mineral resources map (Figure RS-4) depicting SMARA-approved mineral resource potential (MRZ) designations. An excerpt from this countywide SMARA map showing SMARA mineral resource potential designations in the plan area and vicinity is shown on Figure 4.2.

The most important zone with respect to the potential presence of mineral resources is MRZ-2, which is defined as "areas where adequate information indicates that significant mineral (aggregate) deposits are present or where it is judged that there is a high likelihood for their presence." This zone is applied to known mineral deposits or where the likelihood for occurrence of significant mineral deposits is high. Only one MRZ-2 zone has been mapped in Solano County, near Vallejo and Benicia. There are no MRZ-2 designated lands in the plan area or vicinity.

The next general MRZ classification level is MRZ-3. The MRZ-3 zone designation suggests the general "potential" for aggregate deposits. This zone is less definitive than MRZ-2 and is formally defined as "areas containing mineral deposits the significance of which cannot be evaluated from available data." Identified MRZ-3 zones occur throughout the county. Although most are located to the south and southeast of Green Valley, Figure 4.2 shows that the various countywide MRZ-3 designations do overlap into portions of the plan area, including





SOURCE: 2008 Solano County General Plan

Figure 4.2  
**MINERAL RESOURCES IN  
 PLAN AREA AND VICINITY**



one overlap in the northeast portion east of Green Valley Road and south of Rockville Road, and two overlaps north of Reservoir Lane.

These three MRZ-3 overlaps into the plan area are generally shown on the map of geologic subunits in the County General Plan Draft EIR (Exhibit 4.7-1) as underlain by the "Sonoma Volcanics" geologic subunit, a rock unit that is extensively exposed in the southwestern portion of the county. This igneous (i.e., formed by the solidification of magma) rock unit consists predominantly of andesite (dark grayish rock) and rhyolite (a lava form of granite).

## **4.2 PERTINENT PLANS AND POLICIES**

CEQA requires an EIR to identify the plan and policy setting within which the project is proposed and discuss any inconsistencies between the proposed project and these applicable plans and policies [CEQA Guidelines section 15125(d)]. CEQA also indicates that this plan and policy consistency discussion should be limited to the context of evaluation and review of environmental impacts [CEQA Guidelines section 15124(b)].

### **4.2.1 Solano County General Plan**

Those policies and implementation programs from the adopted 2008 Solano County General Plan that are pertinent to consideration of the proposed Specific Plan and its potential impacts on Middle Green Valley agricultural and mineral resources are listed below. Where any proposed Specific Plan land use and development policy or standard is found in this EIR to be potentially inconsistent with one or more of these County-adopted policies or implementation programs, a potentially significant environmental impact have been identified, and one or more mitigations have been identified for incorporation into the Specific Plan to reduce the impact and better implement the General Plan. Otherwise, the proposed Specific Plan is considered consistent with the goals, policies and implementation programs listed below.

The Agricultural Subcommittee to the Citizens' Advisory Committee for the 2008 Solano County General Plan update drafted a vision statement that specifically addressed the agricultural industry's importance to the county and called for its protection and preservation. The vision statement specifically called for:

- ensuring that agriculture endures as an essential part of Solano County's identity and lifestyle;
- maintaining and promoting agriculture as an important business and major contributor to Solano County's economy;
- preserving additional values of agricultural land, including important scenic value within the rural environment, providing habitat, providing options for recreation, and serving as a community separator defining the county's distinct cities; and
- providing opportunities for agriculture to serve as an educational tool and tourist draw.

During the six General Plan update public workshops conducted by the County in 2007 for the Middle Green Valley Special Study Area, discussion focused on the need to resolve desires to maintain the Valley's rural character and on "keeping agriculture viable" while deciding how or

whether to grow and maintain equality among landowners and residents."<sup>1</sup> Many workshop participants described the Valley as being rich in resources and, if additional development were to be considered, expressed the desire to protect some of these resources including agricultural land and good farming soil.<sup>2</sup> Concerns were also expressed pertaining to the viability of farming and ranching in the Valley and how to aid farmers to continue farming.<sup>3</sup>

(a) 2008 General Plan Land Use Chapter. Land use tools such as clustering and transfer of development rights were identified in the Workshops, and are described in the 2008 Solano County General Plan Land Use chapter (General Plan page LU-54) as possible measures to limit the effects of residential development on the rural character of the valley, including agricultural activities. The following "Middle Green Valley Land use Plan" goals, policies and implementation programs are included in the Land Use chapter to "provide a framework for implementing the future vision of a rural community with compatible residential development." (General Plan Land Use chapter, page LU-54)

- Encourage land use development patterns and circulation and transportation systems that promote health and wellness and minimize adverse effects on agriculture and natural resources, energy consumption, and air quality. (Goal LU.G-4)
- Establish rural residential development in a manner that preserves rural character and scenic qualities and protects sensitive resources including agricultural lands, creeks, native trees, open spaces, and views. (Policy LU.P-14)
- Encourage clustering of residential development when necessary to preserve agricultural lands, natural resource areas and environmental quality, to provide for the efficient delivery of services and utilities, and to mitigate potential health and safety hazards. (Policy LU.P-17)
- Protect and maintain the rural character of Middle Green Valley while allowing opportunities for compatible residential development to occur. (Goal SS.G-1)
- Balance the protection of resources in Middle Green Valley (e.g. view sheds, oak woodlands, riparian habitat, sustainable agricultural use) while allowing development to occur. (Policy SS.P-2)
- Encourage cluster residential development through incentives to property owners in hillside and valley floor areas that can support residential uses with least affect on resources, steep slopes, or very high wildfire hazard areas. (Policy SS.P-5)
- In accordance with balancing the protection of resources described in these policies, adopt a program that provides residential development credits to property owners who voluntarily forego or limit development on their lands. The transfer of development rights program should focus incentives on land in areas to be preserved. (Policy SS.P-6)

---

<sup>1</sup>2008 Solano County General Plan, Land Use chapter, page LU-53.

<sup>2</sup>ibid.

<sup>3</sup>ibid.

- Adopt a specific plan or master plan to implement these policies for Middle Green Valley. (Policy SS.P-7)
- Create additional methods to assist landowners who choose to continue farming, such as, but not limited to:
  - enforcing the right-to-farm act and educating residents on the act; and
  - investigating mechanisms for providing farmers with economic assistance to ensure agricultural viability. (Policy SS.P-8)
- Adopt a plan (either a specific plan or master plan) to implement these policies for Middle Green Valley. That [The Middle Green Valley Specific Plan] plan should specify:
  - techniques to ensure development is compatible with the rural character of Middle Green Valley and surrounding areas. Such techniques should include design guidelines and development standards;
  - guidelines for cluster development, including minimum and maximum lot sizes, development standards, and density bonus credits for clustered development;
  - the details of a transfer of development rights program (with an implementing ordinance), including: the designation of areas where development is preferred, creating appropriate and equitable re-zoning, clustering of housing, and determining the ratio of credits to property owners who voluntarily forego development;
  - the number of units and/or credits, with or without clustering, that will provide incentives for all landowners in the area to participate in a market driven transfer of development rights program, based on 400 units, subject to further study;
  - the maximum number of units any property owner can develop, with or without clustering;
  - the techniques to be applied voluntarily by property owners that ensure permanent protection and maintenance of resources/views on lands to remain undeveloped; and
  - Property owners shall receive a minimum development credit for the number of primary dwelling units that would be allowed under the land use designations under the 1980 General Plan. For land designated as Agriculture, the number of units/credits would be one per 20 acres and for land designated Rural Residential the number of units/credits would be one per 5 acres. (Policy SS.I-1)

(b) 2008 General Plan Agricultural Chapter. In addition to the Land Use chapter and associated goals and policies listed above, the 2008 Solano County General Plan includes an "Agriculture" chapter (Chapter 3) which is intended to be a "single location" for the County's overall agricultural goals and policies, closely related to goals and policies in the Land Use chapter. The Agricultural chapter includes the following goals, policies and implementation programs which warrant consideration in evaluating the environmental impacts of the proposed Middle Green Valley Specific Plan:



- Recognize, value, and support the critical roles of all agricultural lands in the stability and economic well-being of the county. (Goal AR.G-1)
- Preserve and protect the county's agricultural lands as irreplaceable resources for present and future generations. (Goal AR.G-2)
- Support the ability of farmers to earn sufficient income and expand the county's agricultural base by allowing for a wide range of economic activities that support local agriculture. (Goal AR.G-3)
- Enable the development of housing opportunities for farm families and farmworkers to ensure the continued competitiveness of Solano County agriculture. (Goal AR.G-4)
- Recognize, support, and sustain agricultural water resources for farmlands. (Goal AR.G-6)
- Ensure that residential development is compatible with surrounding agricultural activities. (Policy AG.P-2)
- Encourage eligible property owners to participate in a County-led agricultural preserve program. (Policy AG.P-6)
- Explore and if feasible implement a voluntary transfer of development rights program to help protect agricultural resources by guiding development to more suitable areas. (Policy AG.P-7)
- Promote efficient management and use of agricultural water resources. (Policy AG.P-9)
- Support efforts by irrigation districts and others to expand the county's irrigated agricultural areas where appropriate. (Policy AG.P-10)
- Support agricultural production by enabling the development of adequate amounts of farmworker and farm family housing in agricultural areas that meet state housing quality standards. (Policy AG.P-11)
- Promote agriculture as a major county industry and support marketing efforts for Solano County-grown and value-added products and agricultural services and compatible activities. (Policy AG.P-12)
- Support changes in local, state and federal taxing structures that promote the retention of production agriculture and the beneficial use of agricultural byproducts. (Policy AG.P-13)
- Support and promote streamlined permit processing procedures for agriculture-related buildings on Agriculture designated parcels (including barns, farm stands, and agricultural processing plants). (Policy AG.P-14)
- Minimize potential conflicts between agricultural and residential uses by encouraging the use of urban-agricultural buffers within city municipal service areas between residential uses and agricultural lands. (Policy AG.P-16)

- Minimize potential conflicts between automobile and bicycle traffic and agricultural operations through transportation planning and capital improvement efforts. (Policy AG.P-17)
- Require agricultural practices to be conducted in a manner that minimizes harmful effects on soils, air and water quality, and marsh and wildlife habitat. (Policy AG.P-19)
- Protect, encourage, and provide incentives to agricultural processors that serve local/regional markets. (Policy AG.P-20)
- Promote natural carbon sequestration to offset carbon emissions by supporting sustainable farming methods (such as no-till farming, crop rotation, cover cropping, and residue farming), encouraging the use of appropriate vegetation within urban-agricultural buffer areas, and protecting grasslands from conversion to non-agricultural uses. (Policy AG.P-21)
- Support recreation and open space activities that are complementary and secondary to the primary agricultural activities on the land. (Policy AG.P-23)
- Continue to support nursery crop industries at locations with favorable growing conditions and transportation access. (Policy AG.P-24)

(c) 2008 General Plan Resources Chapter--Mineral Resources Section. County General Plan policies related to mineral resources are intended to facilitate the extraction of known mineral deposits and prevent the encroachment of incompatible uses adjacent to such deposits. The General Plan Resources chapter identifies one pertinent policy, Policy RS.1-18, calling for the County to create a mechanism by which owners of lands designated as containing important mineral resources can demonstrate to the County that mineral resources are not present, or are not economically feasible to extract. The policy appears to primarily pertain to areas identified as having the highest probability of having significant mineral deposits--i.e., designated MRZ-2 zones, but may also apply to the designated MRZ-3 areas which overlap into the plan area.

#### **4.2.2 Right-to-Farm Ordinance**

Chapter 2.2 of the Solano County Code protects farm operations from nuisance complaints associated with residential uses located next to active agricultural operations. Such complaints can cause farm operators to cease or curtail operations, and can also deter additional investment in farm-related improvements that support the county's agriculture economy. The County's "right-to-farm ordinance," as it is commonly known, guarantees existing farm owners the right to continue agricultural operations, including, but not limited to, cultivating and tilling the soil, burning agricultural byproducts, irrigating, raising crops and/or livestock, and applying approved chemicals in a proper manner to fields and farmland. The ordinance limits the circumstances under which agriculture may be considered a nuisance. To prevent future conflicts, notice of this ordinance is required to be given to purchasers of real property in the county.

### 4.3 IMPACTS AND MITIGATION MEASURES

#### 4.3.1 Significance Criteria

Based on the CEQA Guidelines, the proposed Specific Plan would be considered in this EIR to have a significant agricultural or mineral resources impact if it would:

***Agriculture:***

- (a) Convert Prime Farmland, Unique Farmland, or Farmland of Statewide Importance (Farmland), as shown on the maps prepared pursuant to the Farmland Mapping and Monitoring Program of the California Resources Agency, to non-agricultural use;
- (b) Conflict with existing zoning for agricultural use, or a Williamson Act contract; or
- (c) Involve other changes in the existing environment which, due to their location or nature, could result in conversion of Farmland to non-agricultural use.<sup>1</sup>

***Mineral Resources:***

- (a) Result in the loss of availability of a known mineral resource that would be of value to the region and the residents of the state; or
- (b) Result in the loss of availability of a locally-important mineral resource recovery site delineated on a local general plan, specific plan, or other land use plan.<sup>2</sup>

#### 4.3.2 Impacts and Mitigation Measures

**Impact 4-1: Impact on Prime Farmland.** The 2008 Solano County General Plan indicates that the county included approximately 365,650 acres of agricultural land in 2007, including approximately 157,740 acres of "Important Farmland." This "Important Farmland" included state-designated "Prime Farmland" (farmland considered to have the soil quality, growing season, and moisture supply needed to produce sustained high yields) and "Farmland of Statewide Importance" (farmland similar to "Prime Farmland," but with minor shortcomings, such as greater slopes, etc.). The plan area includes approximately 700 acres of Prime Farmland.

A principal goal of the Draft Specific Plan (DSP), implemented through the DSP-proposed Green Valley Agricultural Conservancy, Agricultural Business Plan, Resource Management Plan, and Transfer of Development Rights program, is to return the substantial portion of this 700-acre total that has not been in recent

**(continued)**

<sup>1</sup>CEQA Guidelines, Appendix G, items II(a) through II(c).

<sup>2</sup>CEQA Guidelines, Appendix G, items X(a) through X(b).



**Impact 4-1 (continued):**

cultivation back to cultivated agricultural use. Nevertheless, the DSP-designated Elkhorn, Nightingale and Three Creeks neighborhood areas overlap some areas of Prime Farmland in the plan area. The DSP-designated Agriculture Residential (5-acre minimum residential lots) and Rural Farm (2 to 5 acres per unit) land use categories within these three neighborhoods, totaling roughly 66 acres, would not preclude continued primary use for sustained high-yield agricultural production. However, the DSP-designated Rural Neighborhood (1 to 4 units per acre) and Rural Mixed-Use Center (4 to 8 units per acre) categories within these neighborhoods, totaling roughly 123 acres, would preclude continued high-yield agricultural production. The DSP would therefore, over time, convert up to approximately 123 acres of Prime Farmland to non-agricultural use. Although this DSP-related Prime Farmland loss would constitute a small (0.08 percent) portion of the County's total "Important Farmland" inventory, and would be offset by the DSP measures to return other plan area Prime Farmlands to high-yield agricultural production, it would nevertheless represent a ***significant environmental impact*** under CEQA.

**Mitigation 4-1:** The DSP would facilitate rural development within the plan area in accordance with the adopted 2008 Solano County General Plan. It has been determined that such development could, over time, permanently remove up to an estimated 123 acres of Prime Farmland from agricultural production. Chapter 19 of this Draft EIR, Alternatives to the Proposed Action, evaluates an alternative Specific Plan land use layout that would avoid all plan area Prime Farmland (Alternative 19.2). The evaluation indicates that the land use layout changes necessary to accommodate the County General Plan-suggested maximum development capacity of up to 400 new primary residential units and up to 100 new secondary residential units in a manner that avoids the 123 acres of plan area Prime Farmland would force more development into sensitive viewsheds and wildlife habitat and corridors, thereby defeating many of the key project objectives listed in section 2.3 of this Draft EIR. Therefore, it has been determined that no feasible mitigation is currently available to avoid this impact, this Specific Plan-related long-term potential for conversion of Prime Farmland in the plan area to urban use would represent a ***significant and unavoidable impact***.

**Impact 4-2: Indirect Impacts on Prime Farmland.** In addition to converting up to approximately 123 acres of Prime Farmland to non-agricultural use, DSP-facilitated development in the Elkhorn, Nightingale and Three Creeks neighborhoods could cause conflicts between new, project-facilitated residential uses and nearby or adjacent or nearby existing Prime Farmland agricultural activity. The large size of most DSP-proposed residential lots would allow substantial building setbacks from this property line, which would reduce the possibility for conflicts. Nevertheless, the introduction of new residential uses near existing Prime Farmland operations could result in land use compatibility problems for the existing farmland operations, such as nuisance complaints from new residents, livestock disturbance by domestic pets, trespassing, and vandalism. Nuisance complaints can potentially cause farm operators to curtail operations, and can deter additional investment in farm-related improvements that support the county's agriculture economy. This potential conflict between DSP-facilitated existing farmland operations, residential development and existing agricultural uses represents a **potentially significant impact** (see criteria [b] and [c] in subsection 4.3.1, "Significance Criteria," above).

*Explanation:*

Nuisance effects resulting from residential development in or adjacent to agricultural areas can include noise (from farm equipment and crop dusting), dust, odors, and drift of agricultural chemicals. These effects could interfere with residential activities and be bothersome to new residents. For the existing agricultural operations within or adjoining the new residential development, such conflicts could include pressures to restrict use of agricultural chemicals and noise- or dust-producing equipment.

**Mitigation 4-2:** Chapter 2.2 of the Solano County Code protects farm operations from nuisance complaints associated with residential uses located next to active agricultural operations. The County's "right-to-farm ordinance," as it is commonly known, guarantees existing farm owners the right to continue agricultural operations, including, but not limited to, cultivating and tilling the soil, burning agricultural byproducts, irrigating, raising crops and/or livestock, and applying approved chemicals in a proper manner to fields and farmland. The ordinance limits the circumstances under which agriculture may be considered a nuisance. To prevent future residential/agriculture conflicts in the County, notice of this ordinance is currently required to be given to purchasers of real property. Consistent with the Solano County Code, and as a condition of future subdivision and other discretionary development approvals in the plan area, the County shall require the development applicant/developer to provide notification in writing to all prospective purchasers of residential property of the potential nuisances associated with adjacent and nearby farm operations and the existence of the County right-to-farm ordinance.

Implementation of this measure would reduce the potential for project indirect impacts on Prime Farmland to a **less-than-significant level**.

**Mineral Resources Impact.** The 2008 Solano County General Plan includes a countywide mineral resources map (Figure RS-4) pursuant to the statewide mapping requirement and associated mineral resource zone (MRZ) classification system mandated by the California Surface Mining and Reclamation Act of 1975 (SMARA). The most important zone with respect to the potential presence of mineral resources is MRZ-2 (areas where significant mineral--i.e., aggregate--mineral resources are or are highly likely to be present). There are no MRZ-2 designated lands in the plan area or vicinity (see Figure 4.2 herein). The next MRZ classification is MRZ-3 (areas containing mineral deposits the significance of which cannot be evaluated from available data). Various General Plan-identified countywide MRZ-3 designations overlap portions of the planning area east of Green Valley Road and northeast of Terminal Reservoir. However, these MRZ-3 designations do not substantially overlap any of the four DSP-designated neighborhood development areas. It has been determined therefore that the project would not result in the loss of availability of a locally-important mineral resource recovery site and would not otherwise result in a substantial loss of availability of a known mineral resource--i.e., the project mineral resource impact would be ***less-than-significant***.

**Mitigation:** No significant mineral resource impact has been identified; no mitigation is required.