



Solano County Health and Social Services Public Health Division



Healthy People – Healthy Community



New Employee Orientation Objectives

- ▶ To become more familiar with...
 - Solano County and its demographics
 - The definition of a Public Health Worker
 - What department, division and bureau you work in
 - Key functions of each Public Health bureau
 - The Solano Public Health Strategic Plan Goals
 - The 10 Essential Services of Public Health
 - The fundamentals of Continuous Quality Improvement

Demographics: Land Area and Population

SOLANO COUNTY
LAND AREA (2011)
821.8 miles²
POPULATION
ESTIMATE (2014)
424,233

Vacaville
27.0 miles²
93,613

Dixon
6.7 miles²
19,005

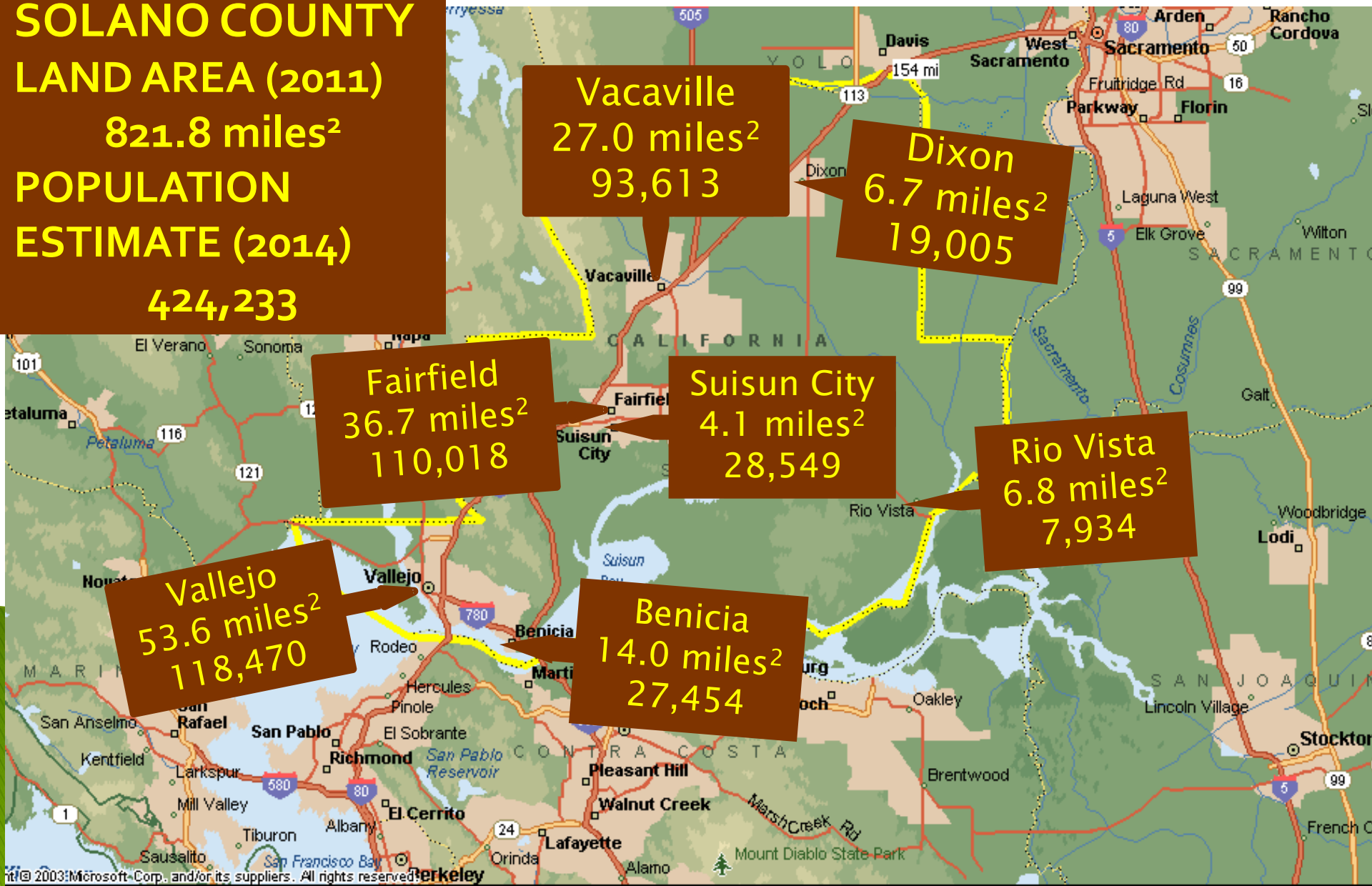
Fairfield
36.7 miles²
110,018

Suisun City
4.1 miles²
28,549

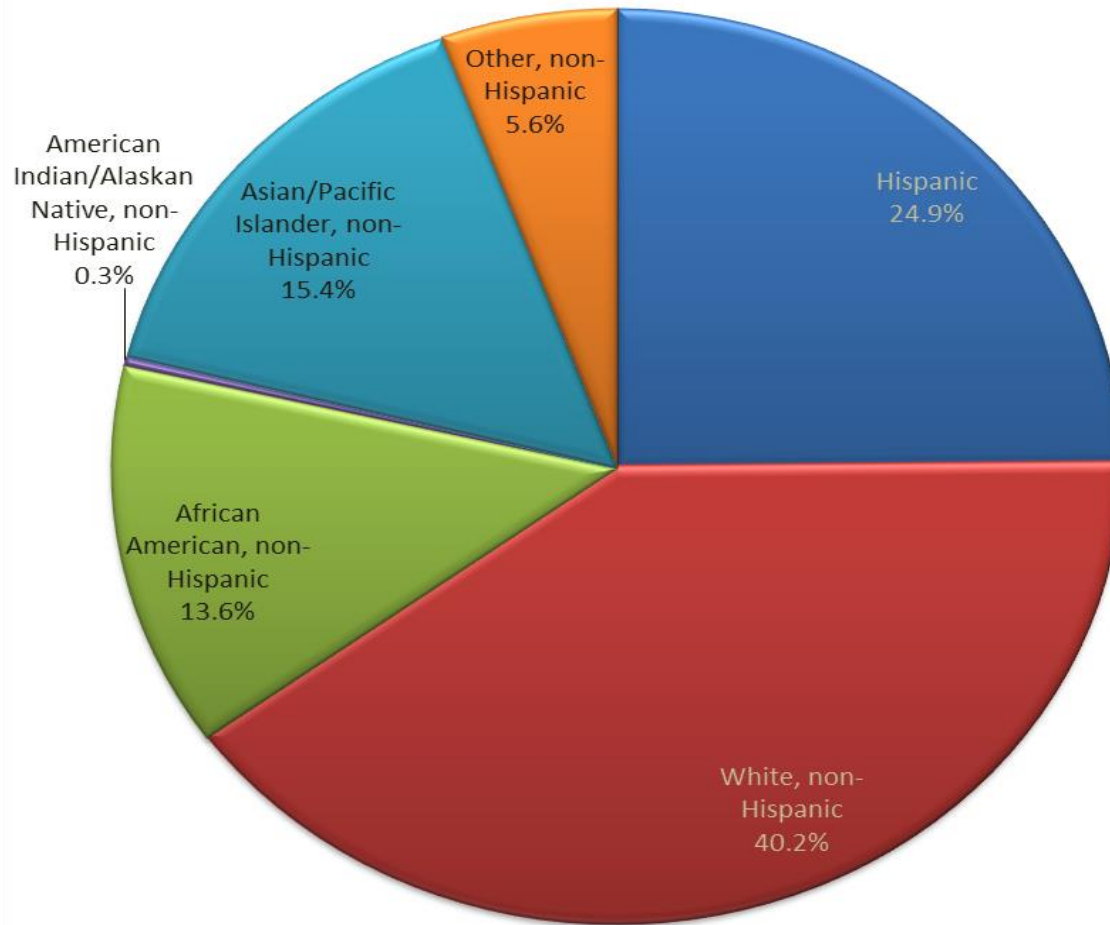
Rio Vista
6.8 miles²
7,934

Vallejo
53.6 miles²
118,470

Benicia
14.0 miles²
27,454



Demographics: Race/Ethnicity



Source: American Community Survey, 2011-2013

Demographics: Language Spoken at Home

	Percentage
English	70.2
Spanish or Spanish Creole	16.6
Asian/Pacific Island Languages	9.8
Other Indo-European Languages	2.9
Other Languages	0.4

Source: American Community Survey, 2011-2013



Healthy People – Healthy Community



Demographics: Age and Gender

- ▶ Median age: 37 years
 - White, non-Hispanic: 46 years
 - Hispanic: 27 years
- Children under 18 years: 24% of population
- Adults 65 years and older: 12% of population

- ▶ Gender
 - 50% Male
 - 50% Female

Source: American Community Survey, 2011–2013



Healthy People – Healthy Community



Social and Economic Factors: Educational Attainment

8 in 9 (88%) Solano adults 25 years and older had a high school degree or higher



About 3 in 9 (34%) Solano adults 25 years and older had an associates degree or higher

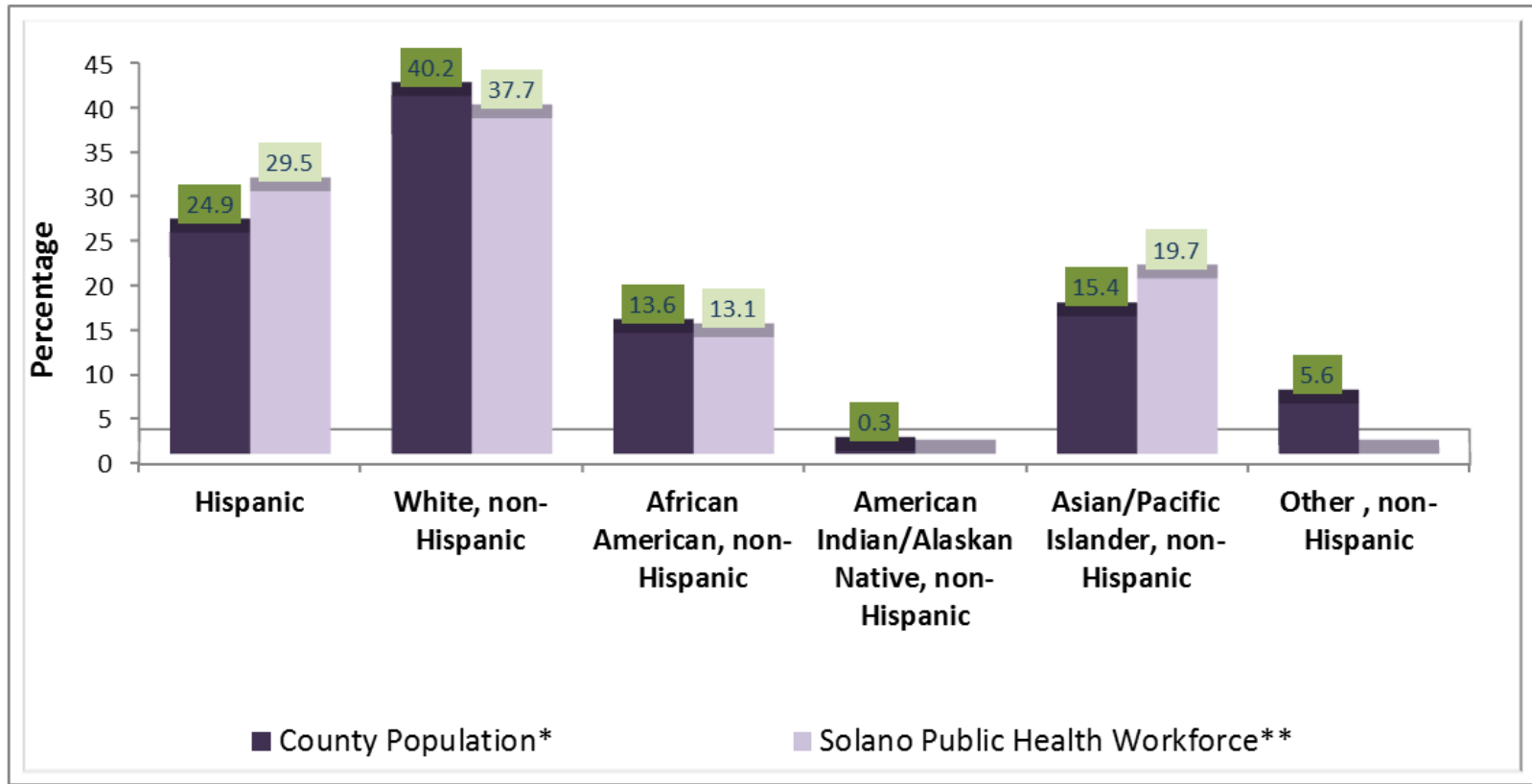


Over 2 in 9 (25%) Solano adults 25 years and older had a Bachelor's degree or higher



Source: American Community Survey, 2011-2013

Solano County Residents and Public Health Workforce



Source:

*American Community Survey, 2011–2013

**Solano County Human Resources, 2013



Healthy People – Healthy Community



Service Locations

Primary Sites

275 Beck Ave. Fairfield
2101/2201 Courage Dr. Fairfield
355/365 Tuolumne St. Vallejo
1119 East Monte Vista Ave. Vacaville

Satellite Sites

Medical Clinics

- Rio Vista Food Ministry
- Mission Solano Fairfield
- Success Center Mare Island
- Mobile Dental Clinic

Health Promotion & Community Wellness

- Mobile HIV Testing Van

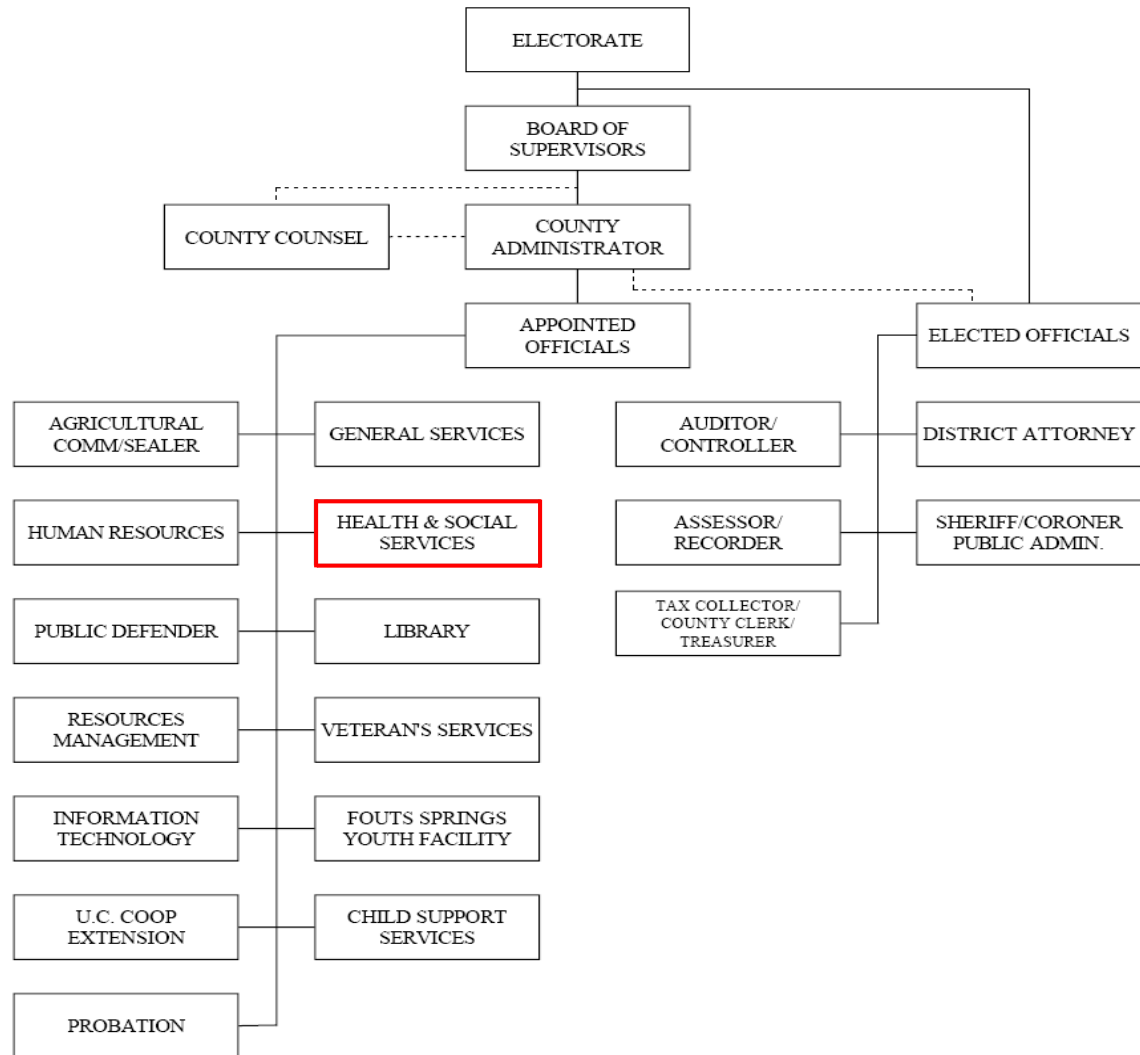
Women, Infant, & Children (WIC) Nutrition Program

- Dixon Family Services
- Dixon Migrant Center
- Rio Vista Community Services

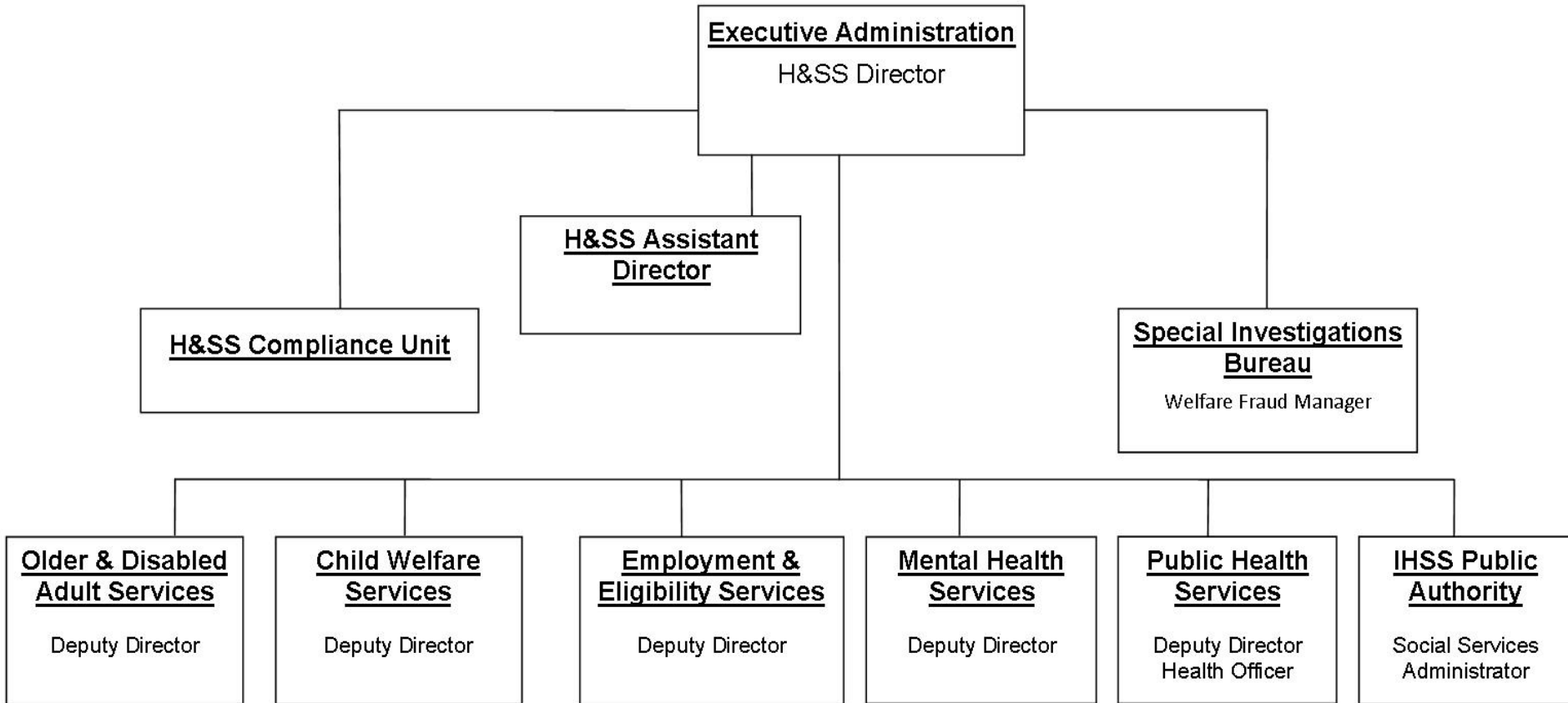
Maternal, Child and Adolescent Health

- Public Health Nursing
 - Solano Community College

Solano County



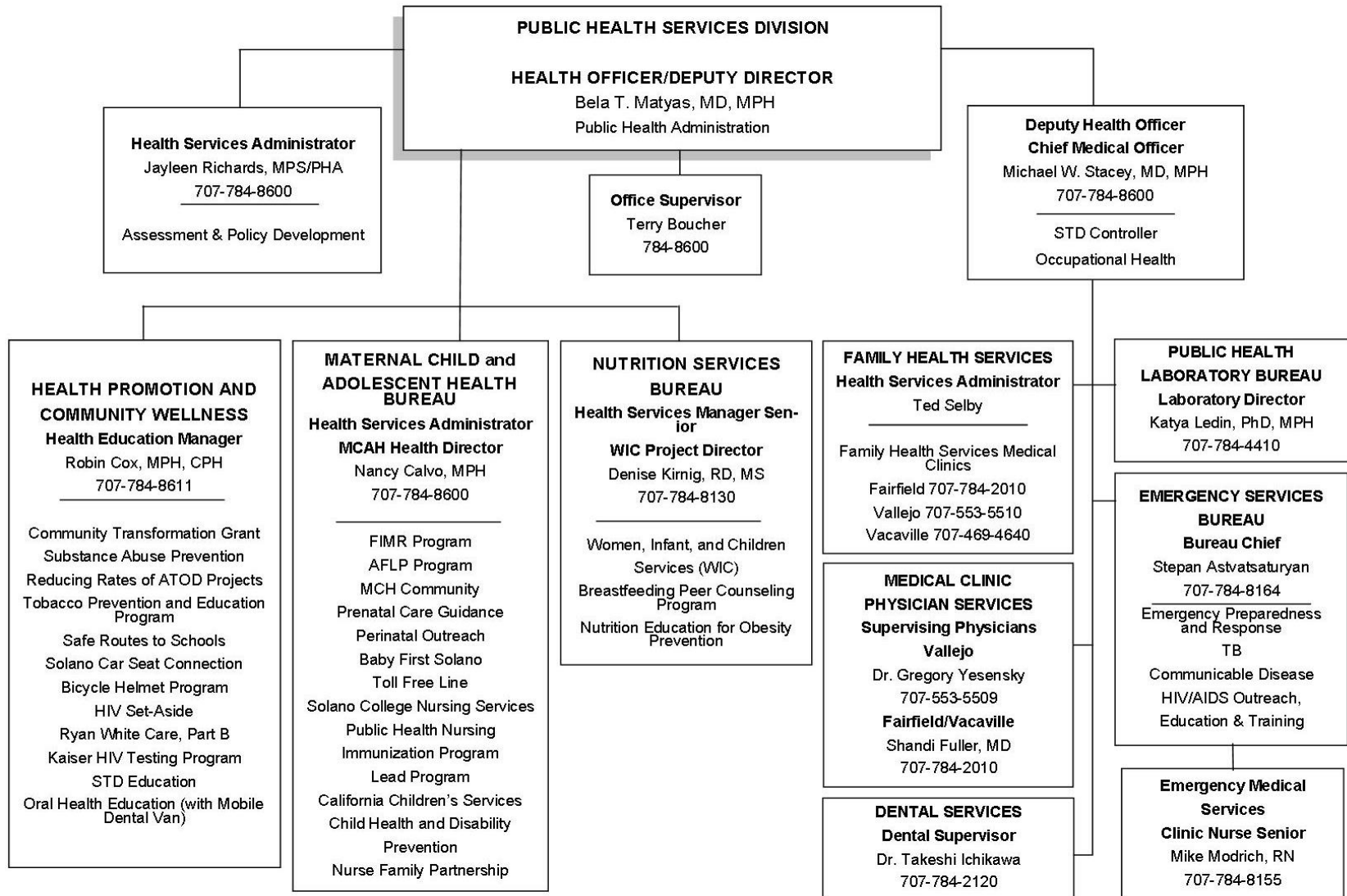
Department of Health and Social Services



Healthy People – Healthy Community



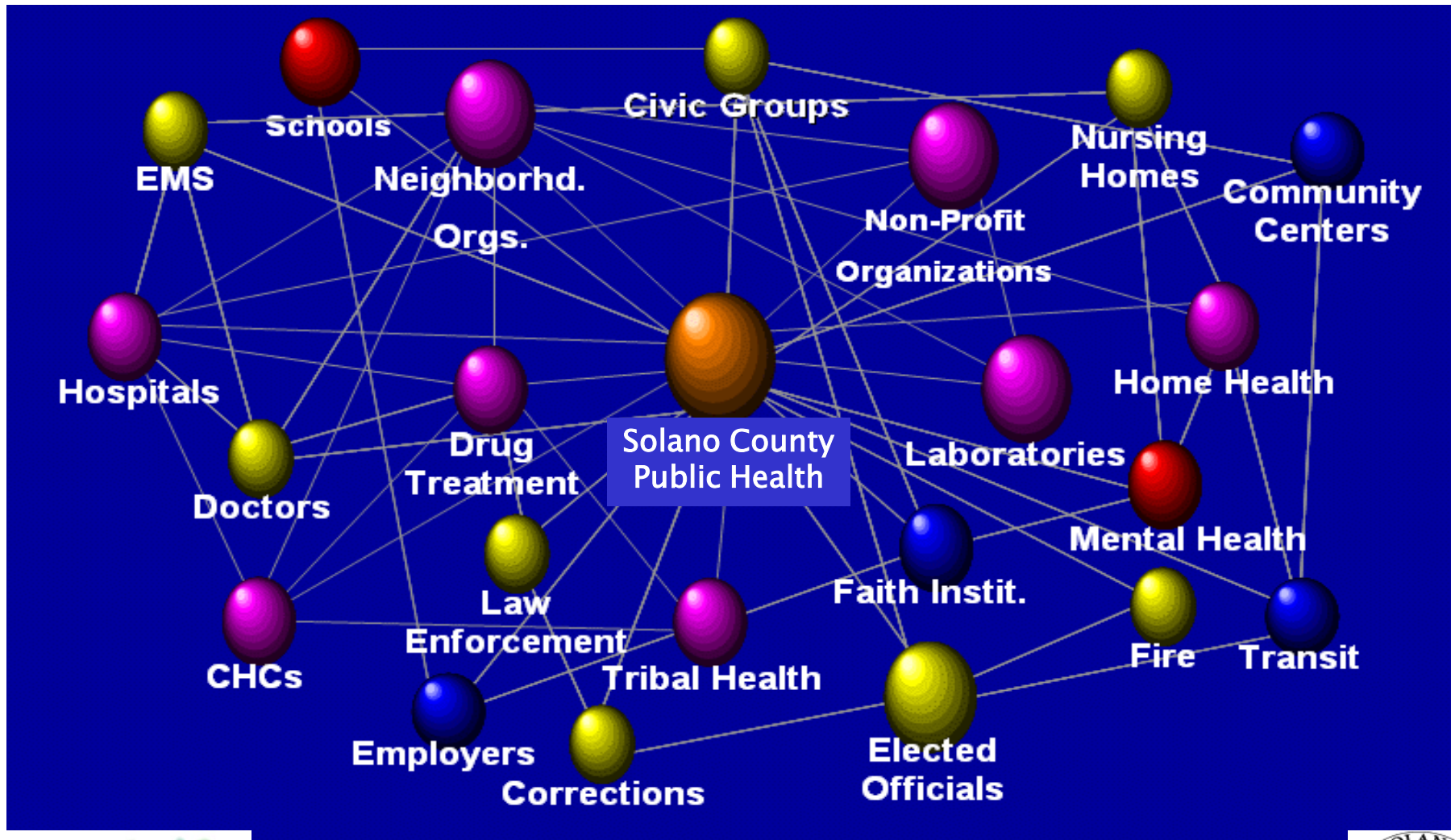
Solano Public Health



Healthy People – Healthy Community



Solano Public Health Partners



Public Health Division

Public Health Services was founded in 1872. It became part of Solano County's Health and Social Services Department, when the department was created in 1992.



Healthy People – Healthy Community



*Bela T. Matyas, MD, MPH
Health Officer
Deputy Director*



*Michael Stacey, MD, MPH
Chief Medical Officer
Deputy Health Officer*



Vision:

Healthy People — Healthy Community

SOLANO
PUBLIC
HEALTH



Healthy People - Healthy Community



Mission

To optimize the health of the community through individual and population-based services which promote health and safety through prevention and treatment of disease and injury.



Healthy People – Healthy Community



Core Values

- ▶ Prevention is the key to community health.
- ▶ Families are healthy when quality of life, healthy development, and healthy behaviors are promoted across all life stages.
- ▶ All Individuals have the right to be treated with fairness, respect, and dignity in a culturally and linguistically appropriate way.
- ▶ Health equity is achieved, disparities eliminated, and the health of all groups is improved by influencing the social, economic, environmental and political factors that influence positive health outcomes.

Core Values (cont.)

- ▶ Increased access to quality client-centered medical care, public health services, and information will enhance the health and well-being of all people served.
- ▶ Partnerships and collaboration with community members and organizations are critical to achieving community health.
- ▶ The ethical practice of public health involves a commitment to excellence and continuous improvement in services and education, delivered with integrity and accountability.

Public Health Accreditation



Public Health Accreditation Board

National Public Health
Department Accreditation

Readiness Checklists



Healthy People – Healthy Community



Solano Public Health Strategic Plan

- ▶ Goal #1: Improve livability of communities
- ▶ Goal #2: Eliminate health inequities
- ▶ Goal #3: Improve perinatal outcomes
- ▶ Goal #4: Decrease incidence of chronic disease
- ▶ Goal #5: Reduce incidence of communicable disease
- ▶ Goal #6: Integrate services to optimize client health
- ▶ Goal #7: Reduce injury rates
- ▶ Goal #8: Improve emergency preparedness and response

Public Health Worker

- ▶ County/Government Employee
- ▶ Public Health Worker
- ▶ Disaster Service Worker

Disaster Service Worker

- ▶ Every PH employee is a disaster service worker, and may be called upon to perform any number of tasks.
- ▶ Be prepared: pack an emergency bag for your car
- ▶ In the event of an emergency, wait for a call from your supervisor.
- ▶ For more information, visit: www.oes.ca.gov

Game Break!



Healthy People – Healthy Community



Public Health Bureaus

- ▶ Emergency Services Bureau (ESB)
- ▶ Family Health Services (FHS)
- ▶ Health Promotion and Community Wellness (HPCW)
- ▶ Public Health Laboratory (PHL)
- ▶ Maternal, Child & Adolescent Health (MCAH)
- ▶ Nutrition Services (Nutrition)
- ▶ Public Health Administration

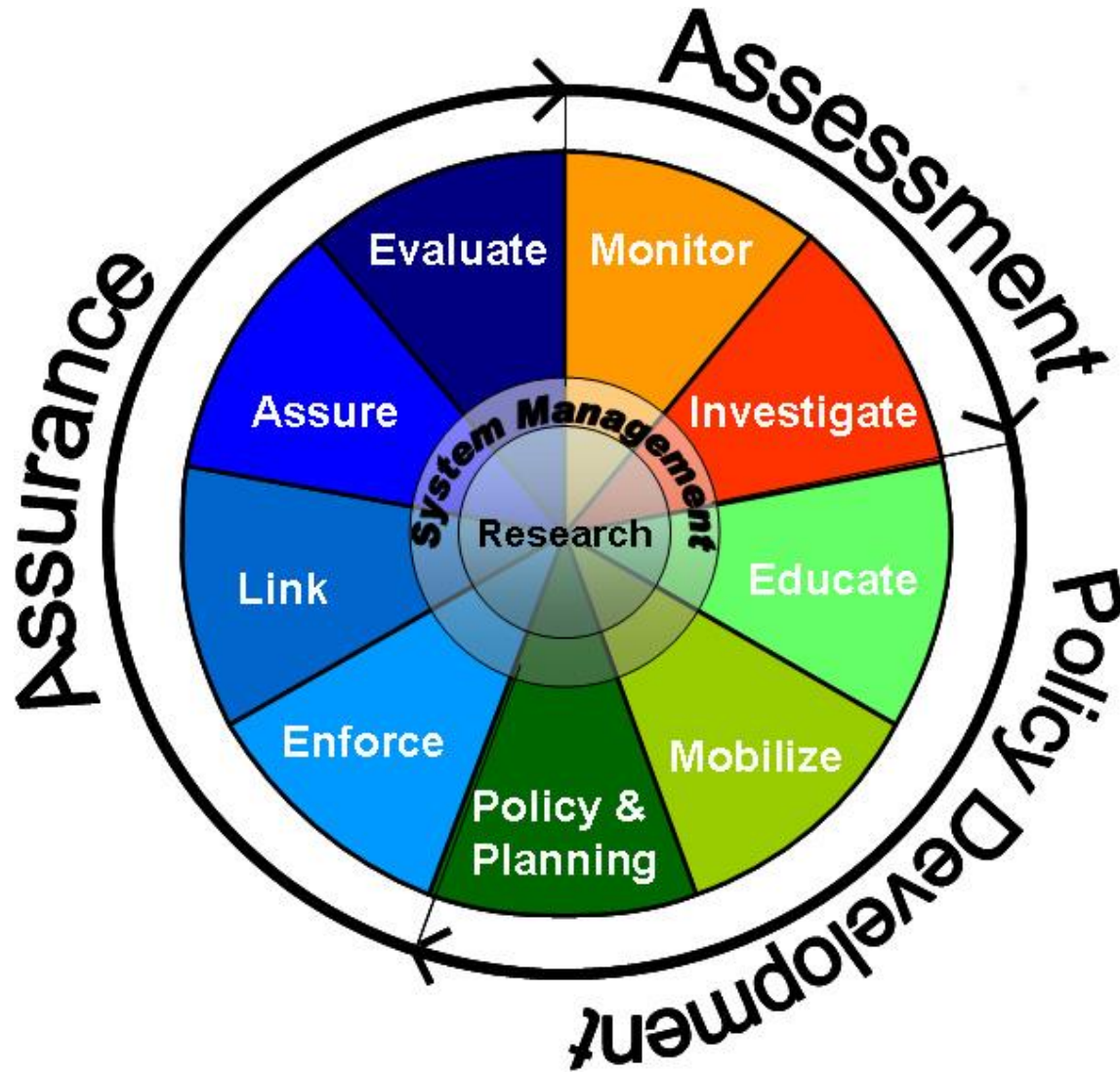
10 Essential Services of Public Health

1. Monitor health status to identify and solve community health problems.
2. Diagnose and investigate health problems and health hazards in the community.
3. Inform, educate, and empower people about health issues.
4. Mobilize community partnerships and action to identify and solve health problems.
5. Develop policies and plans that support individual and community health efforts.

10 Essential Services of Public Health

6. Enforce laws and regulations that protect health and ensure safety.
7. Link people to needed personal health services and assure the provision of health care when otherwise unavailable.
8. Assure competent public and personal health care workforce.
9. Evaluate effectiveness, accessibility, and quality of personal and population-based health services.
10. Research for new insights and innovative solutions to health problems.

10 Essential Services of Public Health



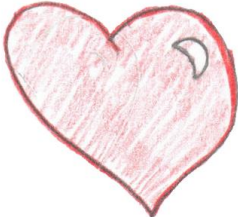
Healthy People – Healthy Community



Emergency Services Bureau



Family Health Services Bureau

We're all  family here!



Solano
Family Health
Services

Health Promotion and Community Wellness Bureau



Healthy People - Healthy Community



Public Health Laboratory



Maternal, Child, and Adolescent Health Bureau



Nutrition Services Bureau



Administration Bureau

- Occupational Health
- Assessment, Policy & Development
- Public Health Administration

Ten Essential Services Game



Healthy People – Healthy Community



Where Do You Fit In?

I work in Solano County

- For the _____ Department.
- In the _____ Division.
- In the _____ Bureau.

Healthy People 2020

Vision

A society in which all people live long, healthy lives.

Mission

Healthy People 2020 strives to:

- Identify nationwide health improvement priorities
- Increase public awareness and understanding of the determinants of health, disease, and disability and the opportunities for progress
- Provide measurable objectives and goals that are applicable at the national, State, and local levels
- Engage multiple sectors to take actions to strengthen policies and improve practices that are driven by the best available evidence and knowledge
- Identify critical research, evaluation, and data collection needs



Healthy People – Healthy Community



Healthy People 2020

Overarching Goals

- Attain high-quality, longer lives free of preventable disease, disability, injury, and premature death
- Achieve health equity, eliminate disparities, and improve the health of all groups
- Create social and physical environments that promote good health for all
- Promote quality of life, healthy development, and healthy behaviors across all life stages

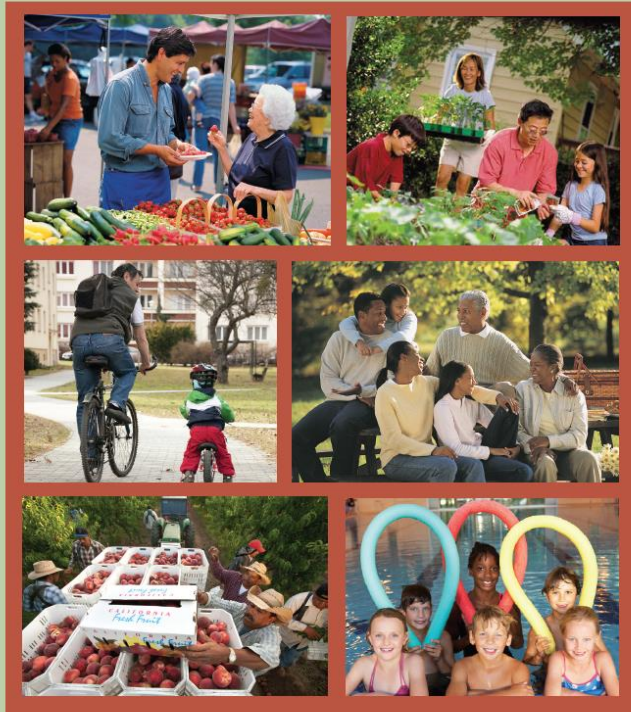
California Wellness Plan



California Department of Public Health

California Wellness Plan

2014



Goals:

- Healthy Communities
- Optimal Health Systems Linked with Community Prevention
- Accessible and Usable Health Information
- Prevention Sustainability and Capacity



Questions & Evaluation