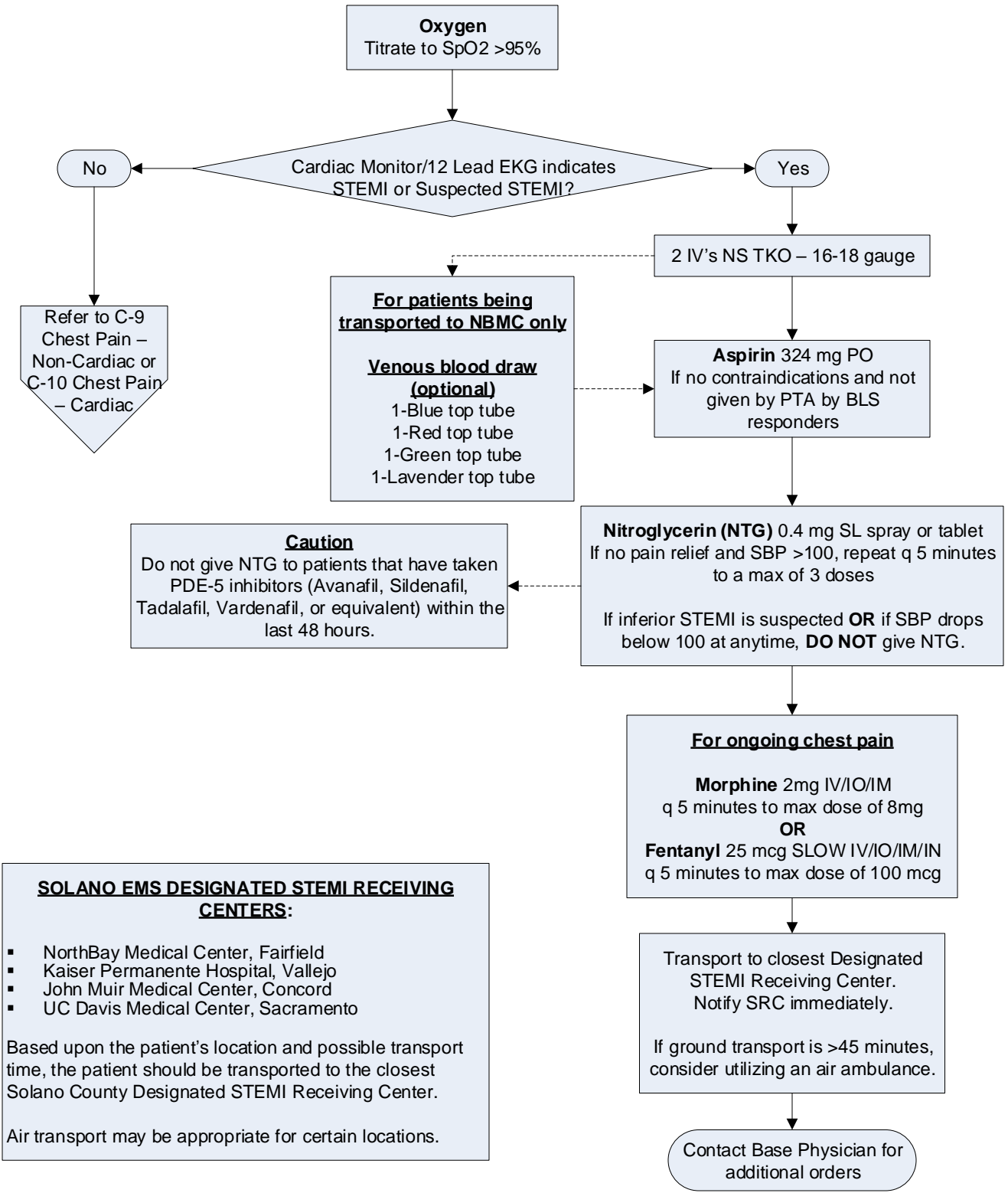


Cardiac Emergencies C-14 Chest Pain – STEMI



SOLANO EMS DESIGNATED STEMI RECEIVING CENTERS:

- NorthBay Medical Center, Fairfield
- Kaiser Permanente Hospital, Vallejo
- John Muir Medical Center, Concord
- UC Davis Medical Center, Sacramento

Based upon the patient's location and possible transport time, the patient should be transported to the closest Solano County Designated STEMI Receiving Center.

Air transport may be appropriate for certain locations.

DISRUPTED COMMUNICATIONS

In the event of a “disrupted communications” situation where a base hospital physician CANNOT be contacted for orders, Solano County Paramedics may not utilize the portions of this protocol requiring base physician orders AND must transport to the closest receiving facility.