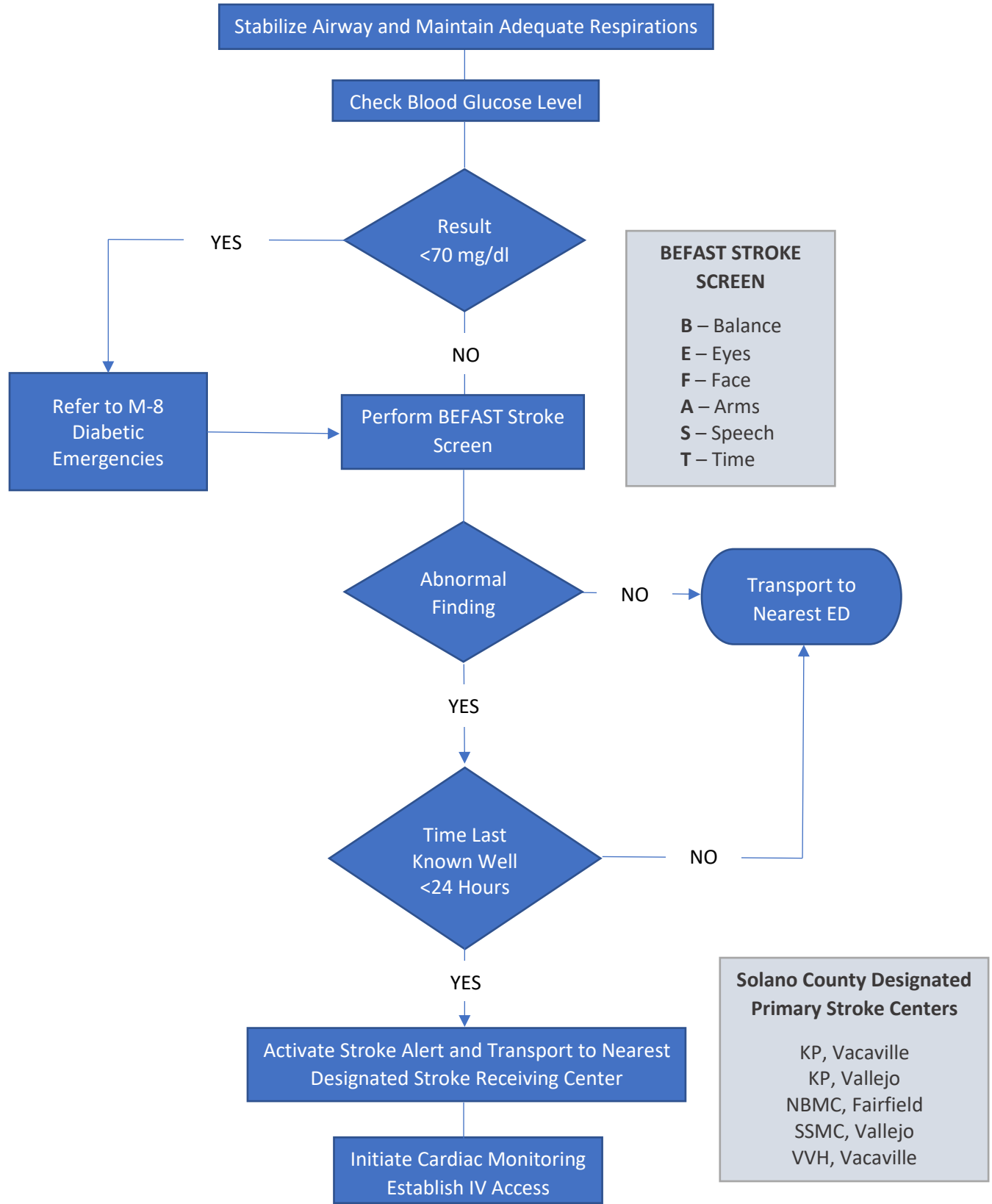


Solano County EMS Agency – Neurological Emergencies

N-4 Stroke Triage Algorithm

Effective: December 15, 2021

Review: December 15, 2023



DISRUPTED COMMUNICATIONS
 In the event of a “disrupted communications” situation, Solano County Paramedics may not utilize all portions of this treatment protocol without Base Hospital Contact as needed to stabilize an immediate patient.