

If you have any questions, or if you think you need to obtain approval for a particular waste discharge, please call your local wastewater treatment plant or stormwater management agency listed below:

ALAMEDA COUNTY

Stormwater

Alameda Countywide
Clean Water Program
(510) 670-5543

Wastewater Treatment

City of Hayward
(510) 881-7900
City of Livermore
(510) 373-5230
City of San Leandro
(510) 577-3401
Dublin San Ramon Services District
(925) 846-0568
East Bay Municipal Utility District
(510) 287-1651
Oro Loma Sanitary District
(510) 276-4700
Union Sanitary District
(510) 477-7500

NAPA COUNTY

Wastewater Treatment

City of Calistoga
(707) 942-2837
City of St. Helena
(707) 967-2878
Napa Sanitation District
(707) 258-6000
Town of Yountville
(707) 944-2988

SAN FRANCISCO COUNTY

Stormwater

Department of Public Works, BERM
(415) 695-7310

Wastewater Treatment

Department of Public Works, BERM
(415) 695-7310

SAN MATEO COUNTY

Stormwater

San Mateo Countywide
Stormwater Pollution
Prevention Program
(415) 363-4708

Wastewater Treatment

City of Burlingame
(650) 342-3727
City of Millbrae
(650) 259-2388

City of Pacifica

(650) 738-4660

City of San Mateo

(650) 522-7340

Cities of South San Francisco-
San Bruno

(650) 877-8555

North San Mateo County

Sanitation District

(650) 991-8200

Sewer Authority Mid-Coastside

(650) 726-0124

South Bayside System

Authority

(650) 594-8411, ext. 141

SOLANO COUNTY

Stormwater

Fairfield-Suisun Urban Runoff
Management Program

(707) 429-8930

Vallejo Sanitation and Flood

Control District

(707) 644-8949

Wastewater Treatment

City of Benicia

(707) 746-4336

Fairfield-Suisun Sewer District

(707) 429-8930

City of Vacaville

(707) 469-6400

Vallejo Sanitation and

Flood Control District

(707) 644-8949

SONOMA COUNTY

Wastewater Treatment

City of Petaluma

(707) 762-5892

Sonoma County Water Agency

(707) 526-5370

Sub Regional Reclamation Facility

(707) 543-3369

Washing Cars and Other Vehicles



Vehicle Shop Practices for a Cleaner Bay

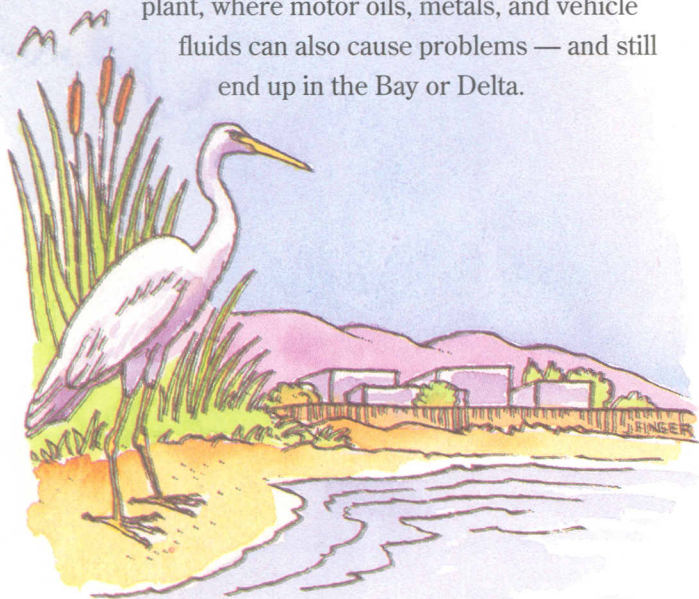
PRODUCED AND DISTRIBUTED BY BAY AREA
WASTEWATER TREATMENT PLANTS AND
STORMWATER MANAGEMENT AGENCIES

Vehicle Service Shops Can Make a Difference.

Vehicle service employees can help protect water quality in important ways by following the guidelines for shop practices and maintenance in this brochure. We hope you will join with us and businesses throughout the Bay Area as we work together to safeguard the health of the Bay.

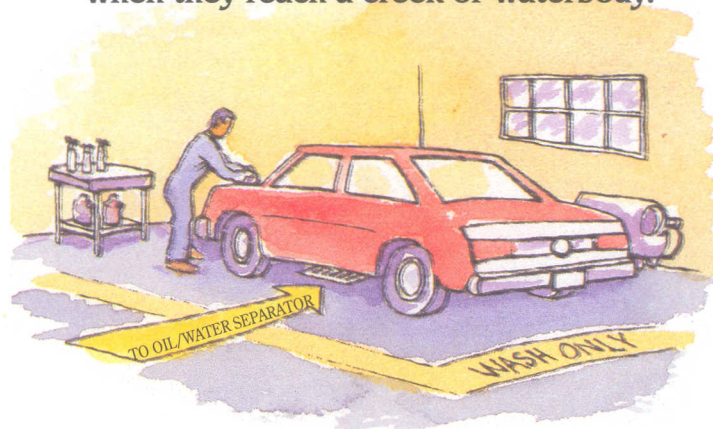
Outside your shop, storm drains carry runoff from streets, gutters, and parking lots directly to local creeks and the San Francisco Bay and Delta with no waste treatment. When oils, dissolved metals, and other vehicle fluids reach a creek or the Bay they threaten water quality and the health of wildlife in our waterways.

Inside the shop, most drains carry waste into a sanitary sewer and on to the local wastewater treatment plant, where motor oils, metals, and vehicle fluids can also cause problems — and still end up in the Bay or Delta.



How You Can Help!

Even biodegradable soaps are toxic when they reach a creek or waterbody.



- Make sure soapy wash water does not run into a street, gutter, or storm drain. It should be collected and passed through an oil-water separator before discharging to the sanitary sewer.
- Designate a vehicle washing area with a wastewater collection and treatment (oil/water separator) system. Use only that area for vehicle washing
- Recycle wash water to minimize discharge to the sanitary sewer.
- Use soap and elbow grease to clean wheels. Never use spray-on (acid-based) wheel cleaners where rinsewater may flow to a street, gutter, or storm drain. If used on a wash pad, acid-based products may require additional treatment beyond oil/water separation.

